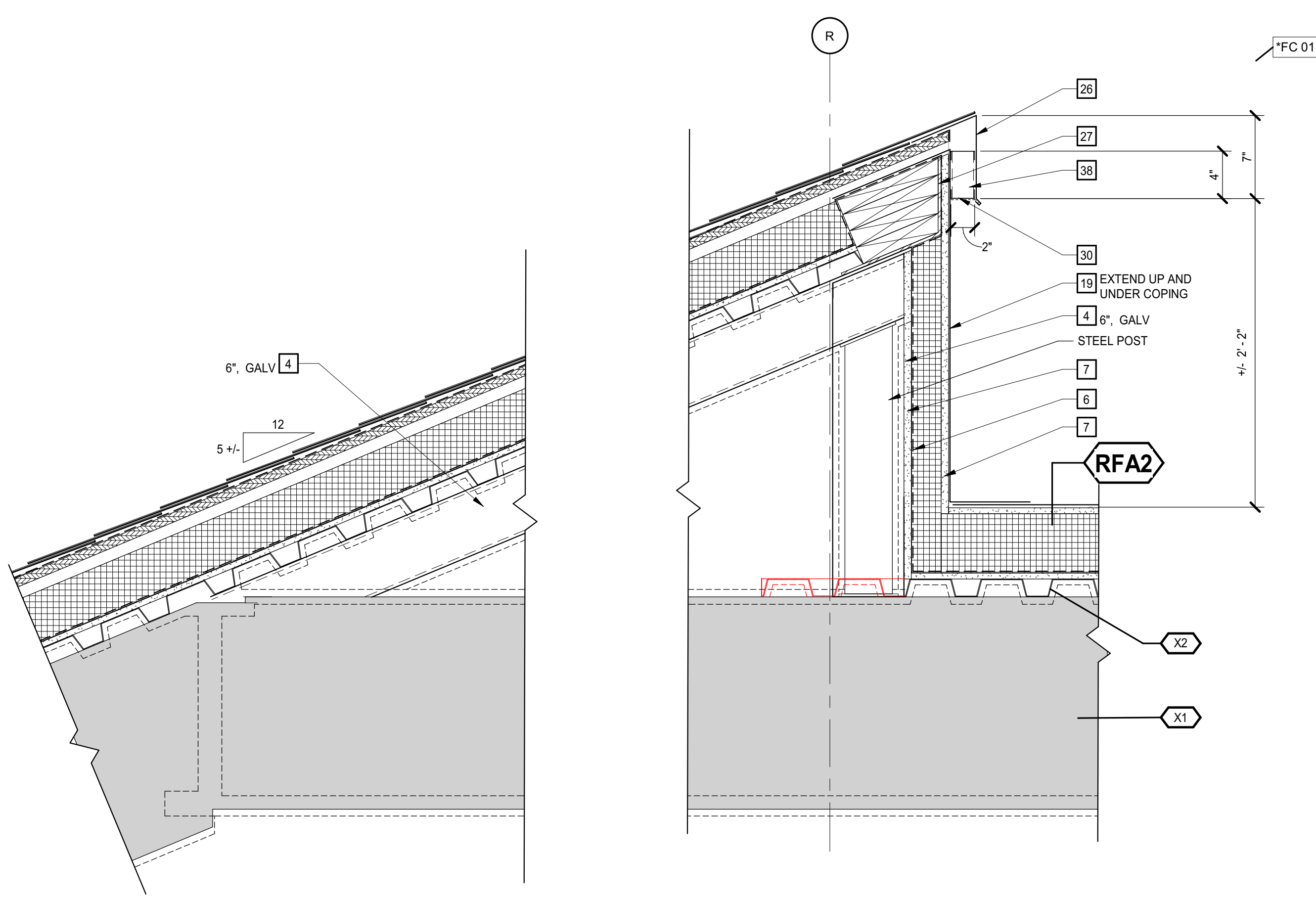
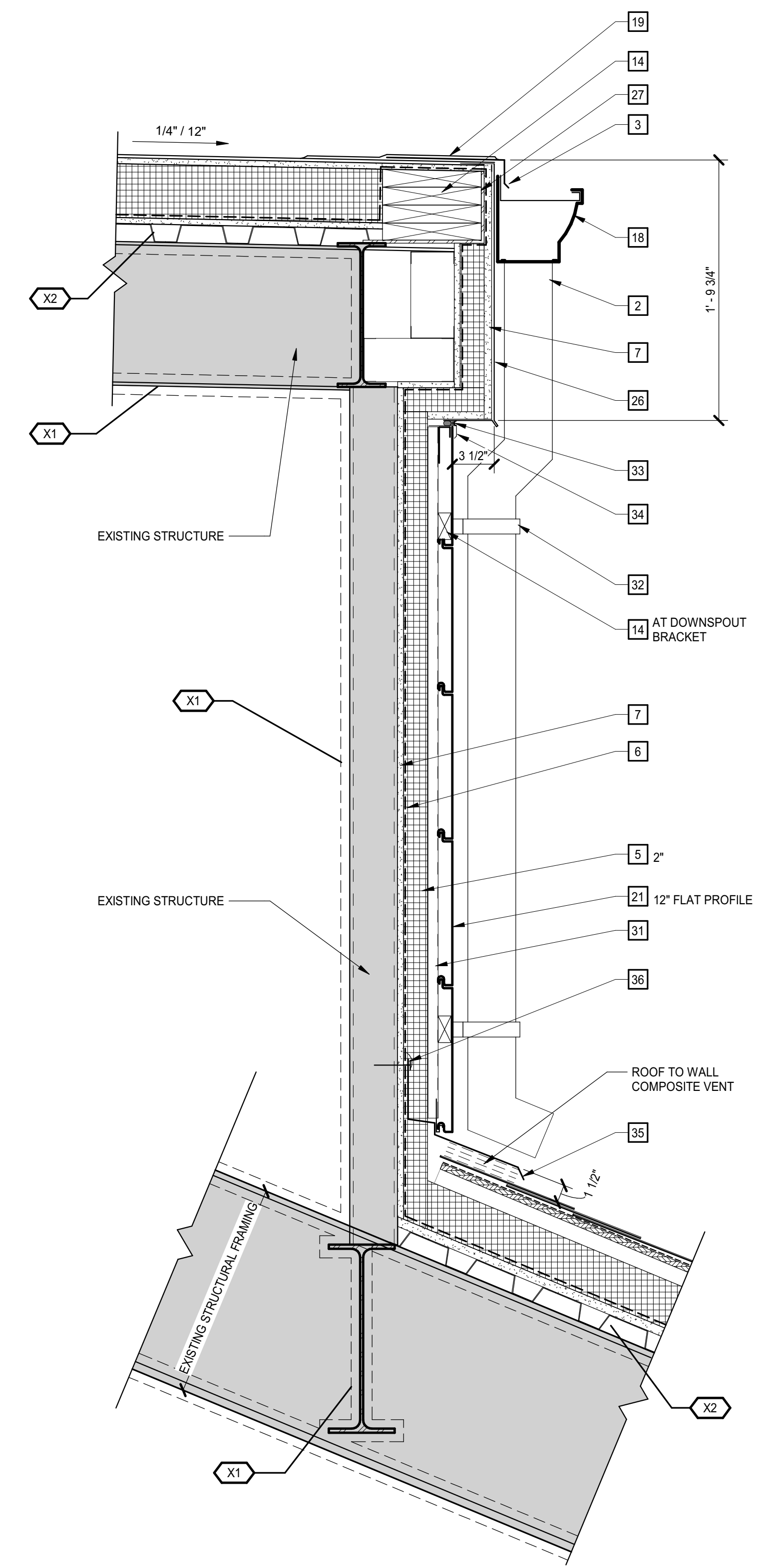


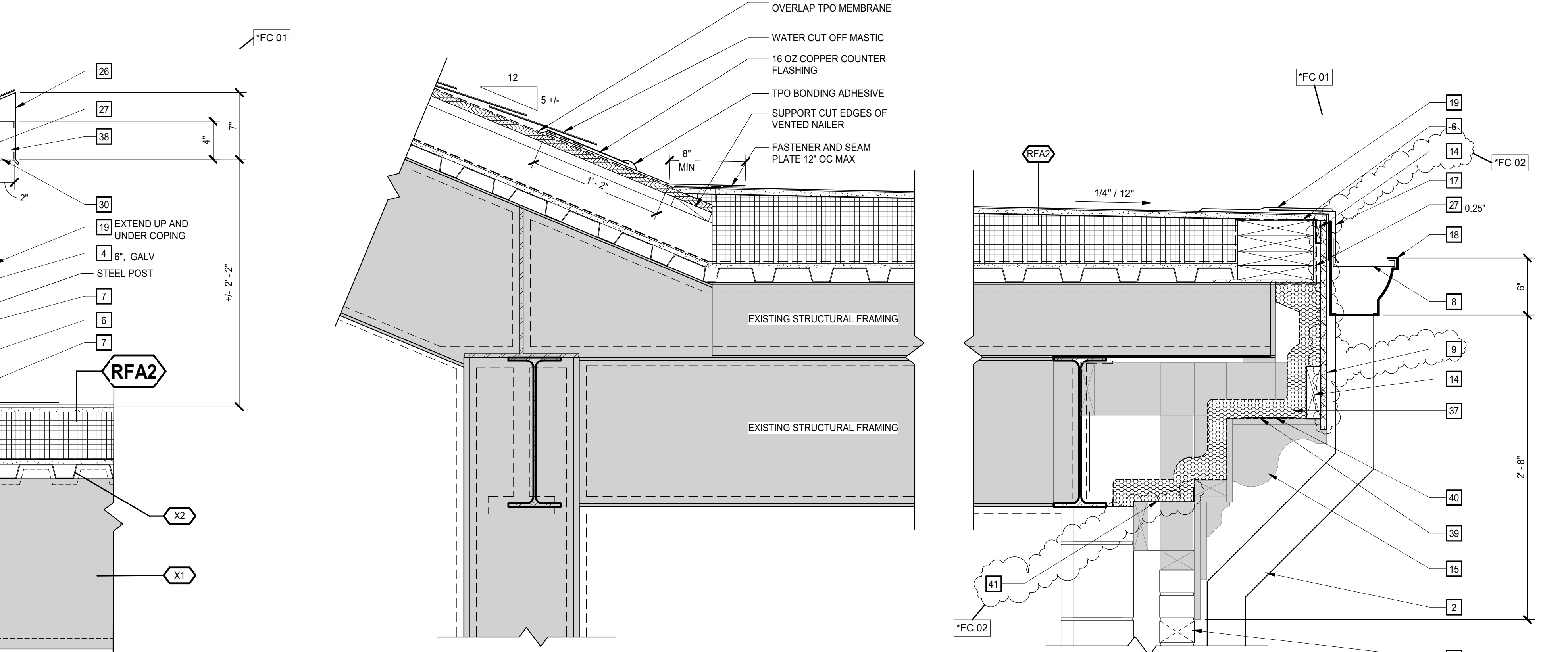
3/27/2019 10:03:20 AM



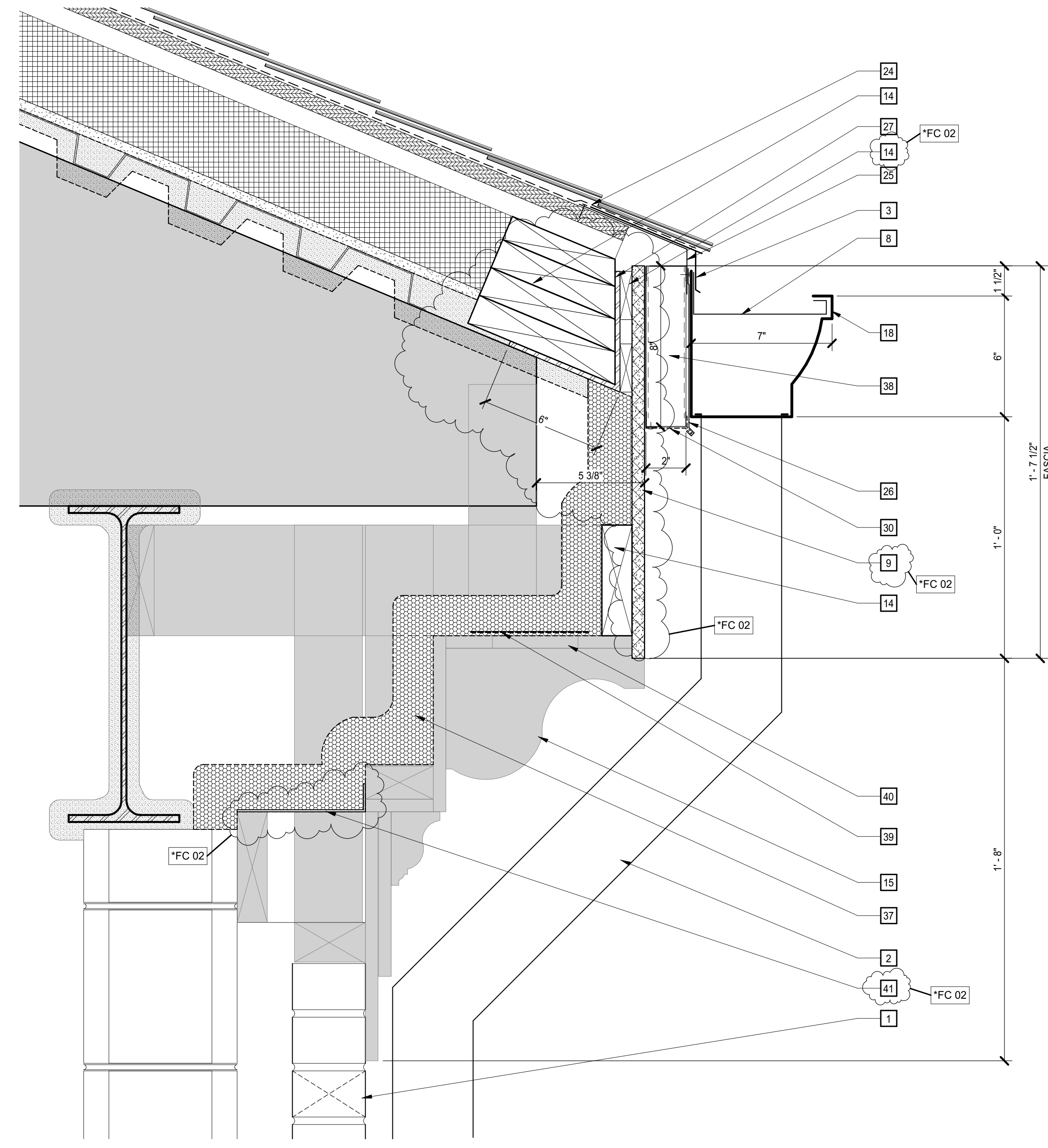
**5 DETAIL**  
A4.1.1 A10.2.1 1 1/2" = 1'-0"



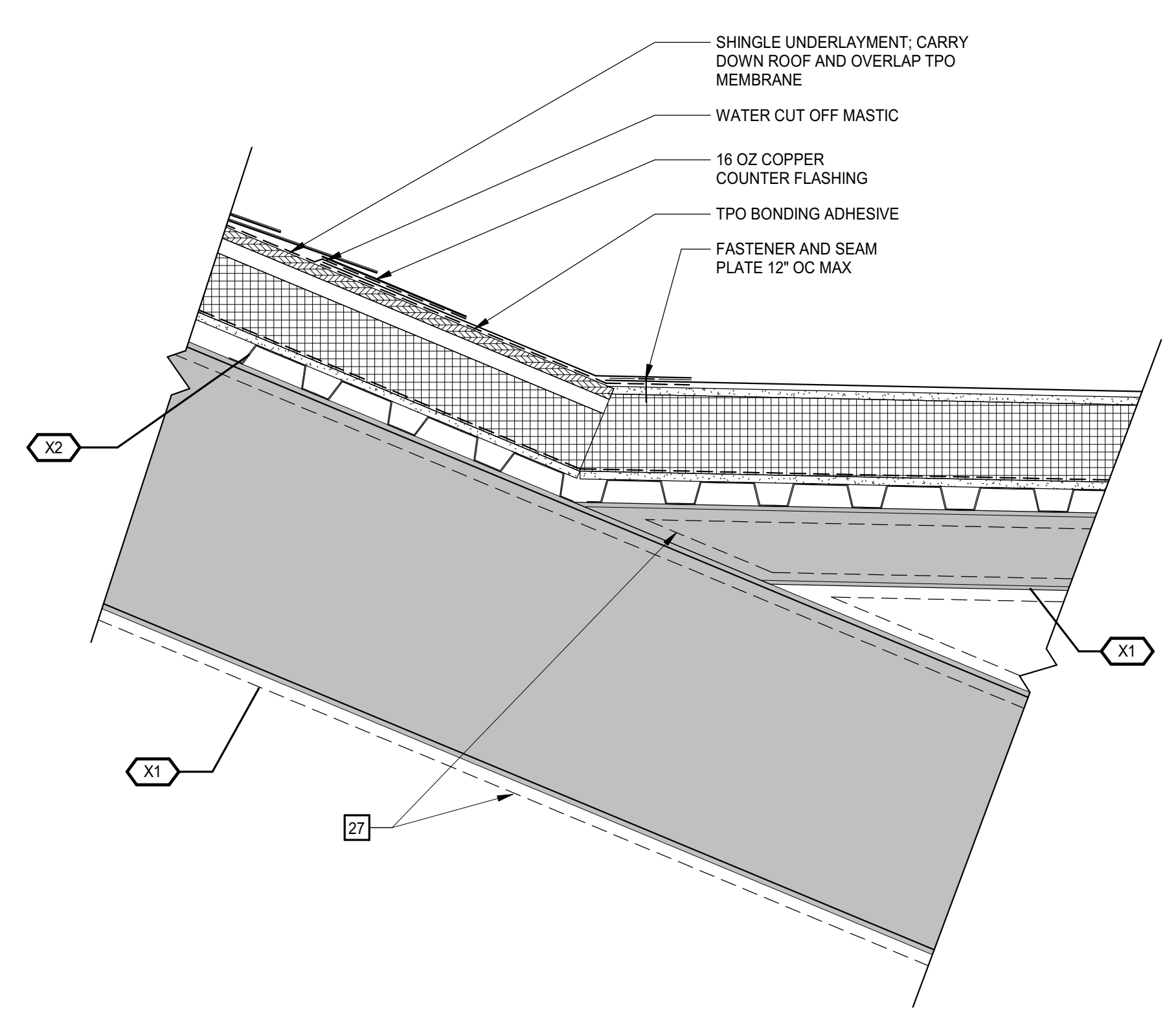
**4 SECTION**  
A10.1.1 A10.2.1 1 1/2" = 1'-0"



**3 DETAIL**  
A1.2.3 A10.2.1 1 1/2" = 1'-0"



**2 ENLARGED DETAIL**  
A2.0.3 A10.2.1 3" = 1'-0"

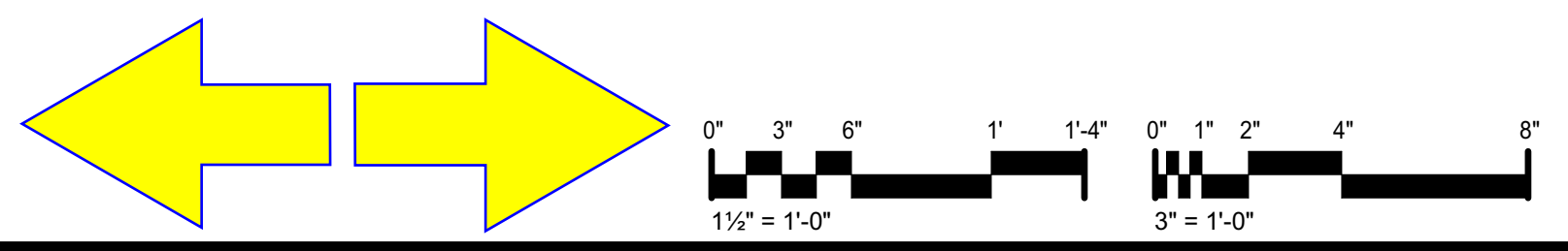


**1 SECTION**  
A10.1.1 A10.2.1 1 1/2" = 1'-0"

**ROOF DETAILS KEYNOTES**

REPRESENTED BY [n]  
APPLIES TO DRAWINGS A10.2.1 - A10.2.n

- 1 CUT IN CELLULAR WEEP JOINTS AT HEAD, 24" OC
- 2 COPPER DOWNSPOUT
- 3 ALUM DRIP EDGE; DARK BRONZE
- 4 CFSF
- 5 RIGID INSULATION
- 6 AIR AND VAPOR BARRIER
- 7 1/2" EXTERIOR SHEATHING
- 8 GUTTER STRAP
- 9 PAINTED CEMENTITIOUS FASCIA BOARD; COUNTERSINK FASTENERS AND FINISH TO MATCH ADJACENT
- 10 3/4" FRT EXTERIOR PLYWOOD SHEATHING
- 11 REMOVE EXISTING OGEE WOOD MOLDING AND REINSTALL
- 12 SOFFIT BOARD
- 13 1/2" SUBSTRATE BOARD
- 14 PPT WOOD BLOCKING
- 15 EXISTING MODILLION; REPLACE ALL WHERE DAMAGED OR DETERIORATED
- 16 SEALANT
- 17 COPPER FLASHING WITH HEMMED DRIP EDGE
- 18 7" X 6" COPPER OGEE GUTTER
- 19 ROOF MEMBRANE FLASHING
- 20 ROOF MEMBRANE
- 21 PREFINISHED METAL PANEL
- 22 ROOFING UNDERLAYMENT
- 24 SELF ADHERING UNDERLAYMENT
- 25 24 GA. GALV ROOF FLANGE
- 26 22 GA. PREFINISHED ALUM FASCIA COVER WITH DRIP EDGE; DARK BRONZE
- 27 BENT PLATE
- 28 CONTINUOUS CLEAT
- 29 PRE-FINISHED METAL FLASHING WITH DRIP EDGE
- 30 22 GA. PERFORATED CLOSURE WITH 54% FREE AREA; DARK BRONZE FINISH
- 31 7/8" CFSF FURRING; VERTICAL
- 32 DOWNSPOUT BRACKET
- 33 BACKER ROD AND SEALANT
- 34 PREFINISHED METAL CAPTURE ANGLE; MATCH PANEL COLOR ;CONT AT PERIMETER
- 35 PREFINISHED BASE FLASHING WITH HEMMED EDGE
- 36 TERMINATION BAR AND SEALANT
- 37 2" SPF WITH IGNITION BARRIER
- 38 GALV Z-FURRING AT 12" OC
- 39 GALV FLASHING TO COVER VENT OPENINGS
- 40 REPAIR WOOD SOFFIT AT PREVIOUS DOWNSPOUT PENETRATIONS; FINISH TO MATCH ADJACENT
- 41 SHEEYT METAL CLOSURE; SECURE TO EXISTING FRAMING



**MOSELEYARCHITECTS**

**PROGRESS**  
**PRINT NOT FOR**  
**CONSTRUCTION**

**SEAL OF ARCHITECT**  
**MOSELEY J. LOCKE**  
**52282**  
**ARCHITECT**  
**NORTH CAROLINA**

**Dobo Hall Renovation - Package A**

**SCO PROJECT NO. 18-19798-01A**

**UNC Wilmington**

**4978 CAHILL DR, WILMINGTON, NC 28403**

PROJECT NO.	DATE
580999	MARCH 27, 2019
REVISIONS	
DATE	DESCRIPTION
3-5-19	*FC 01
3-20-19	*FC 02

ROOF DETAILS

**A10.2.1**